

Dixit Dominus primo
Selva morale et spirituale (1640/41)
Viola / Trombone I

Claudio Monteverdi



17



27



32



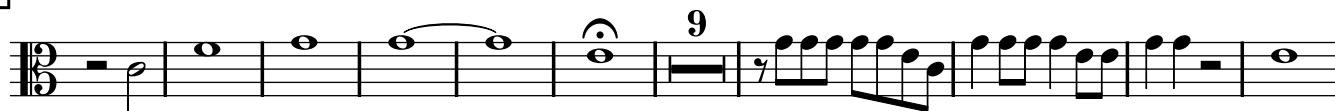
66



86



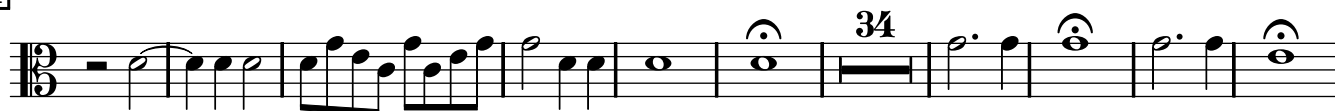
115



134



144



[188]



[204]



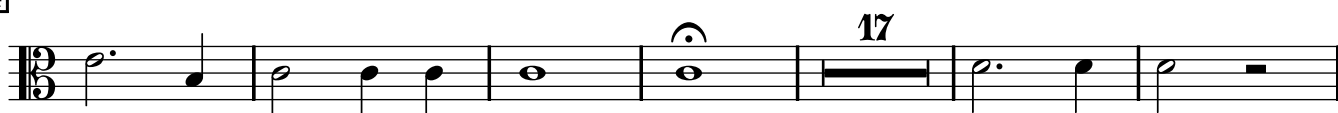
[211]



[219]



[224]



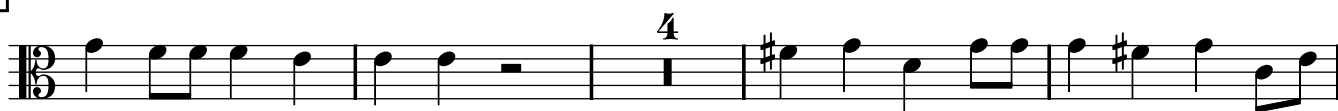
[247]



[253]



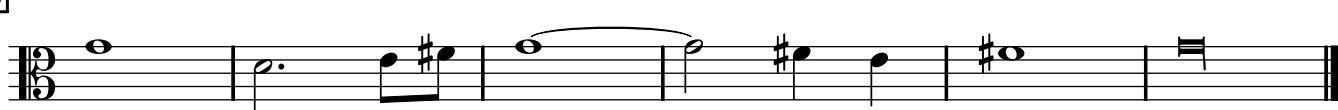
[279]



[287]



[298]



Dixit Dominus primo

Selva morale et spirituale (1640/41)

Viola / Trombone II

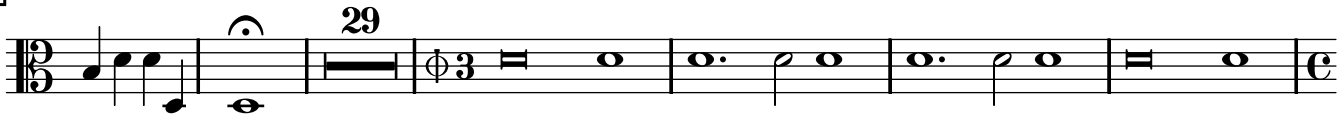
Claudio Monteverdi



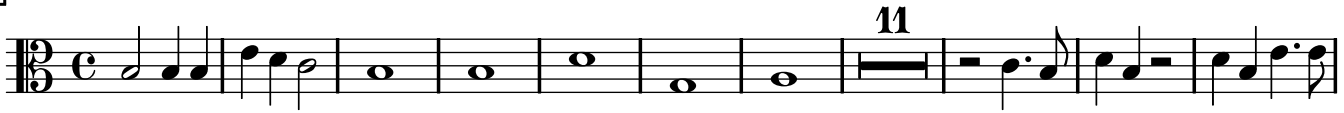
17



31



66



87



118



131



141



150

197

[illegible]

209

214

222

First staff of music, treble clef, key signature of one flat (B-flat). The melody consists of eighth and quarter notes.

227

Example 17 shows a musical staff with a treble clef and a key signature of one flat (B-flat). The staff contains a sequence of notes and rests: a half note B-flat, a quarter rest, a quarter note A, a quarter note G, a quarter rest, a quarter note F, a quarter note E, a quarter rest, and a quarter note D. The staff is labeled with the number 17.

250

273

281

289

Dixit Dominus primo

Selva morale et spirituale (1640/41)

Violoncello (Viola) / Trombone III

Claudio Monteverdi



17



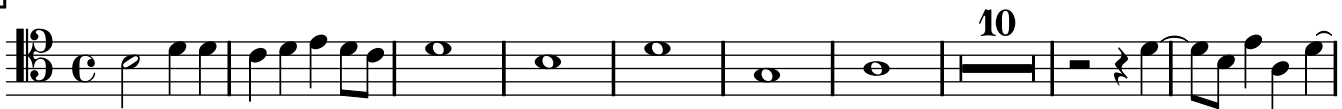
27



32



66



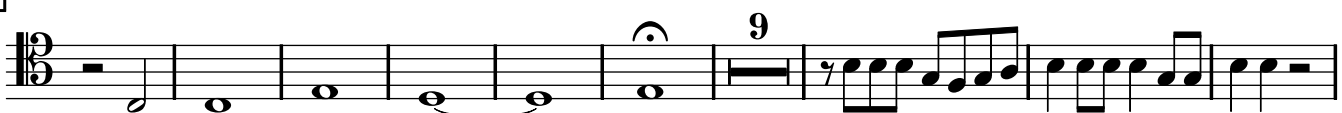
85



94



115



133



143



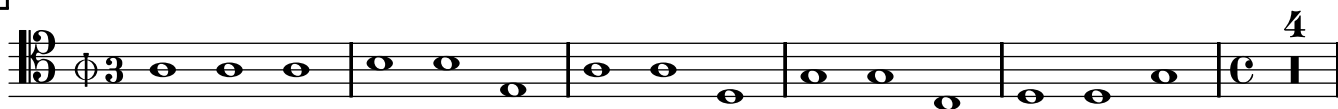
184



197



209



218



245



273



297



Dixit Dominus primo

Selva morale et spirituale (1640/41)

Violoncello (Viola) / Trombone IV

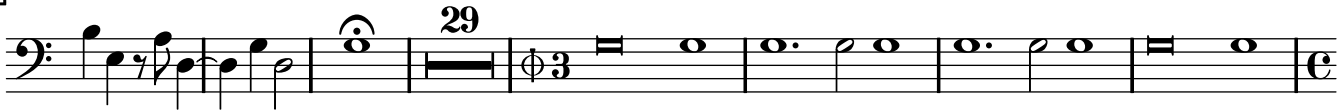
Claudio Monteverdi



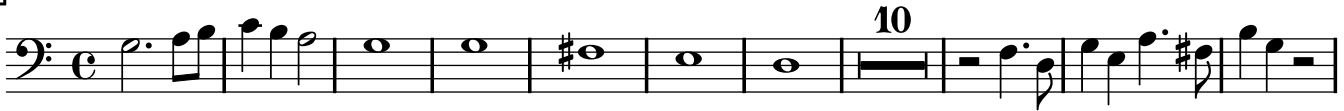
17



30



66



86



114



132



142



[150]



[197]



[209]



[214]



[222]



[228]



[250]



[277]



[285]



[297]

